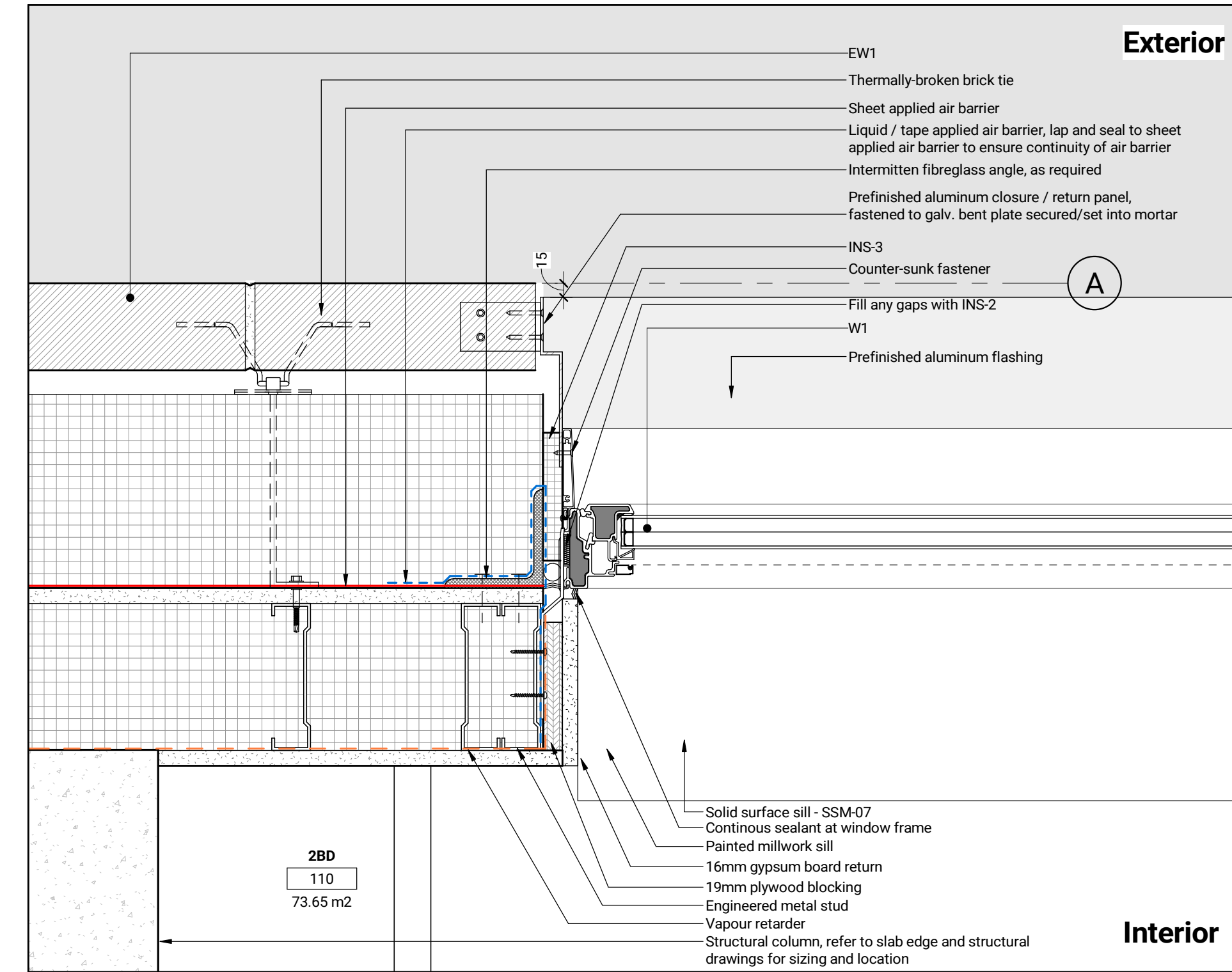


Typical Corner Detail at EW1, tie in to W1

1:5

8  
A602



Plan Detail - Typical W1 Detail in EW1

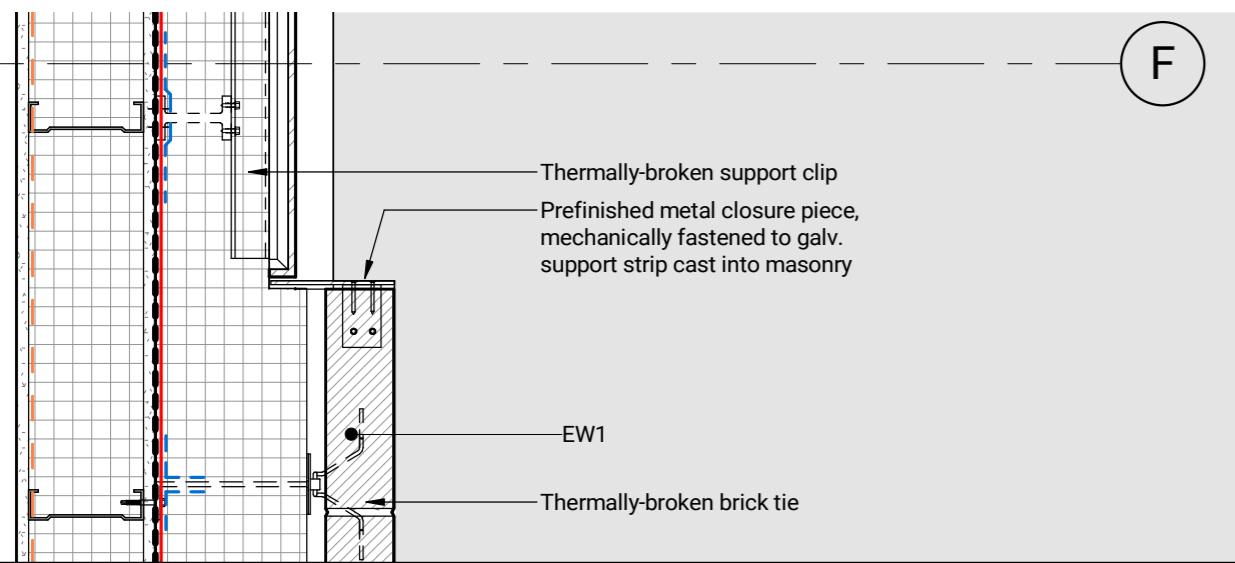
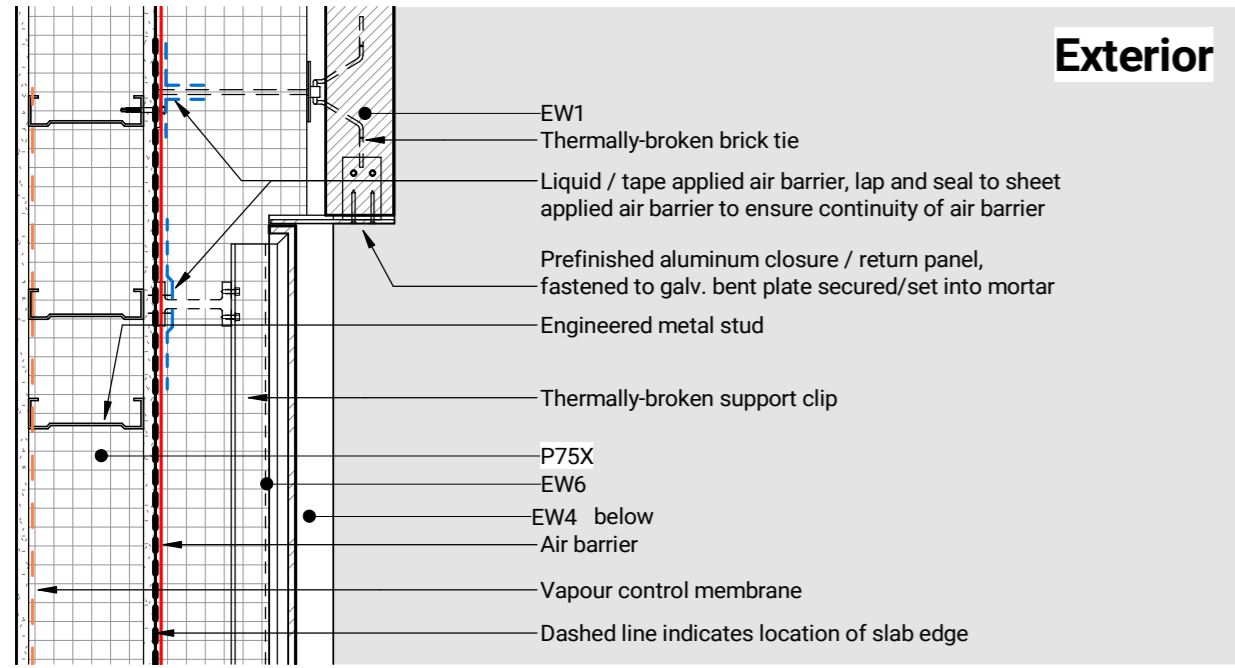
1:5

5  
A602

6b

Interior

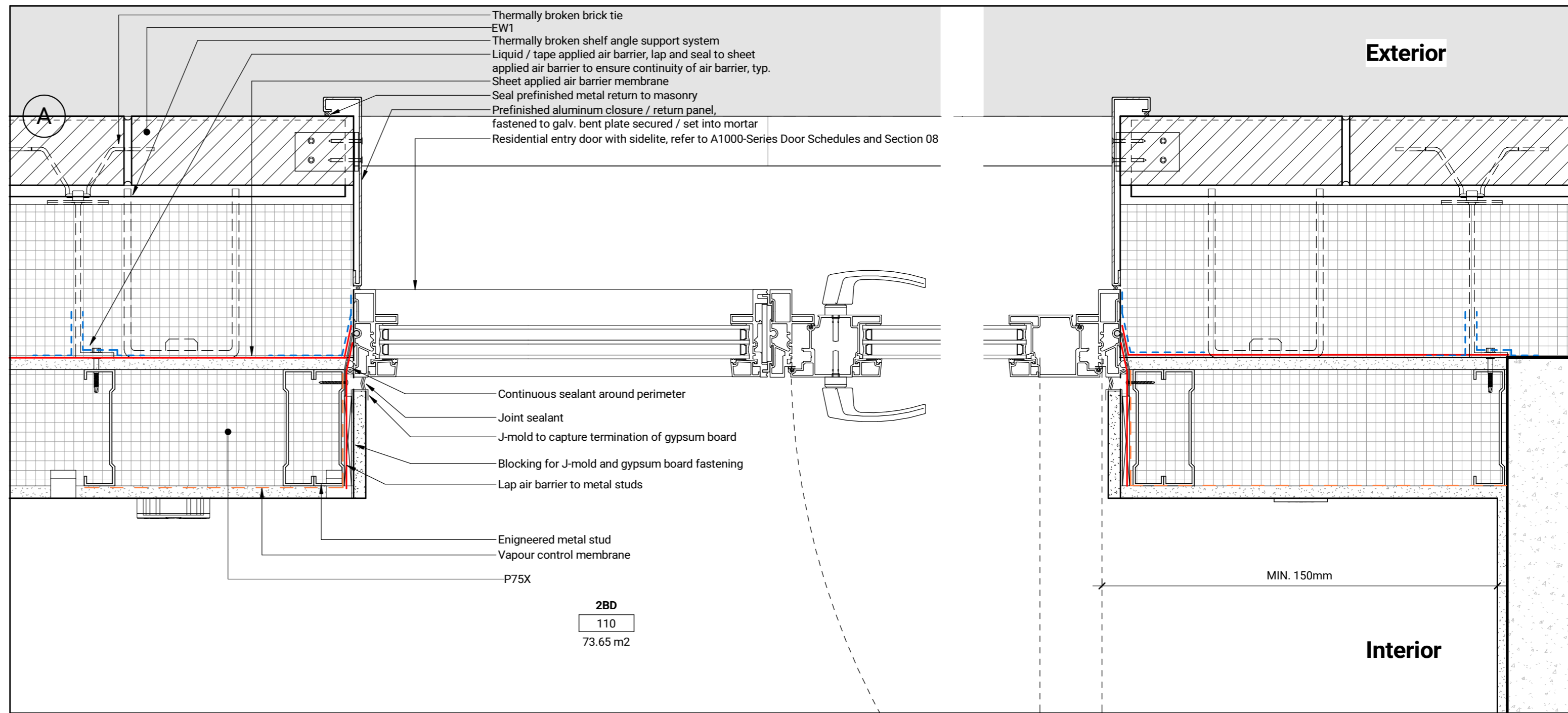
Exterior



Typical Detail - EW1 to EW4/EW6 Transition

1:10

11  
A604

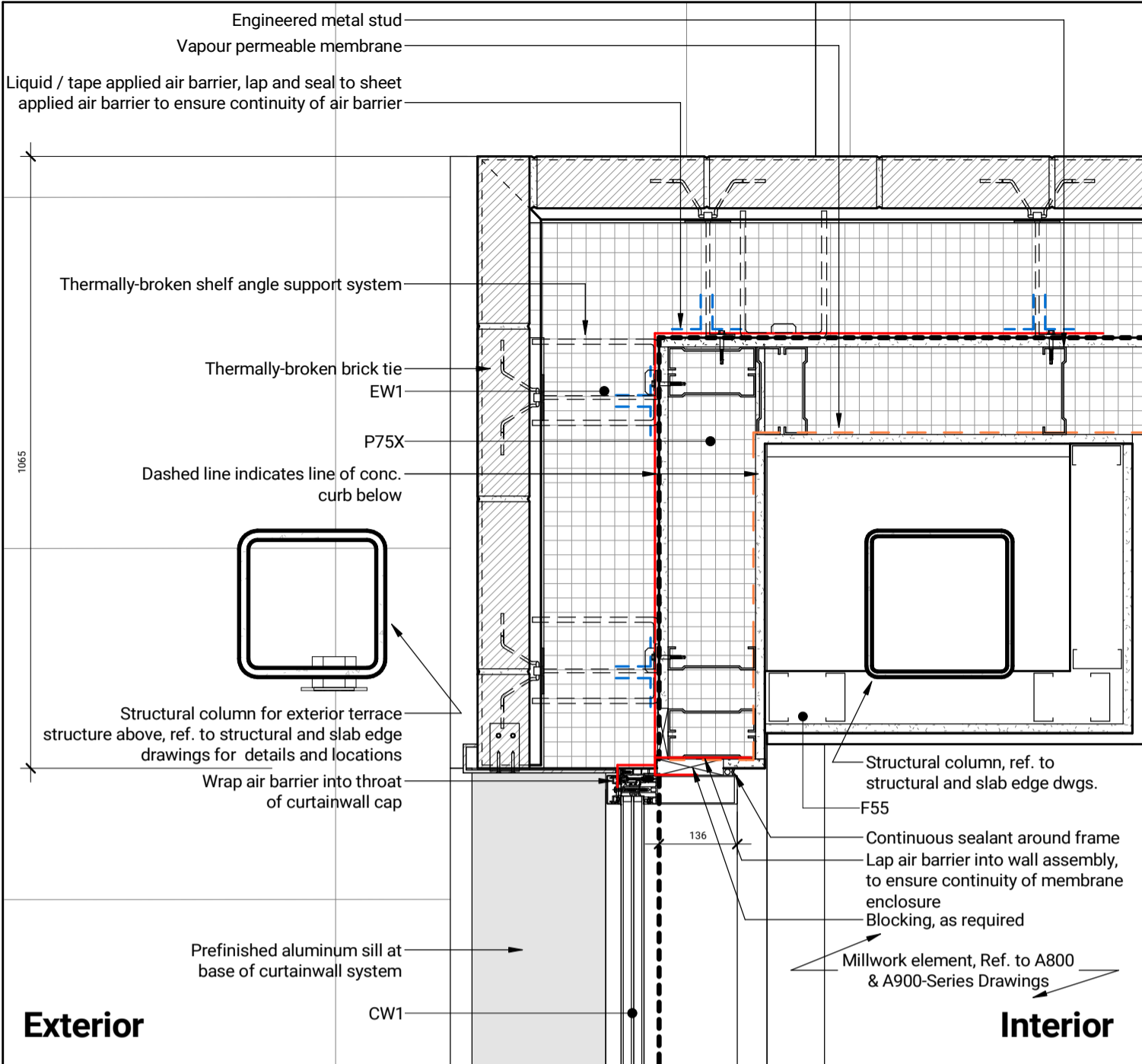


2BD  
110  
73.65 m2

Plan Detail - Typical Residential Exterior Entry Door

1:5

5  
A604

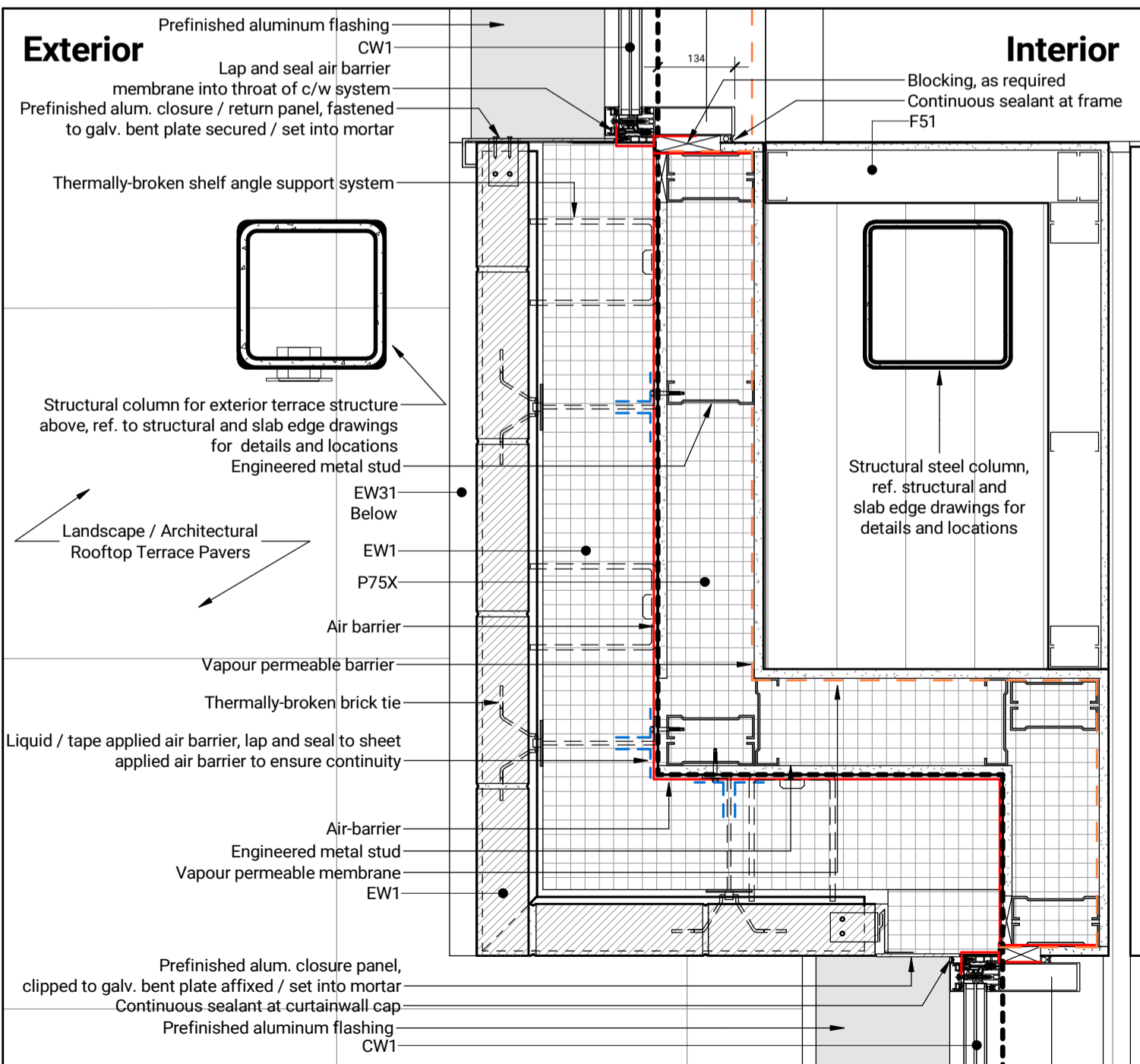


Plan Detail - Central Amenity North-West Corner Detail on Level 4

1 : 10

3

A605



Plan Detail - Central Amenity South-West Corner Detail on Level 4

1 : 10

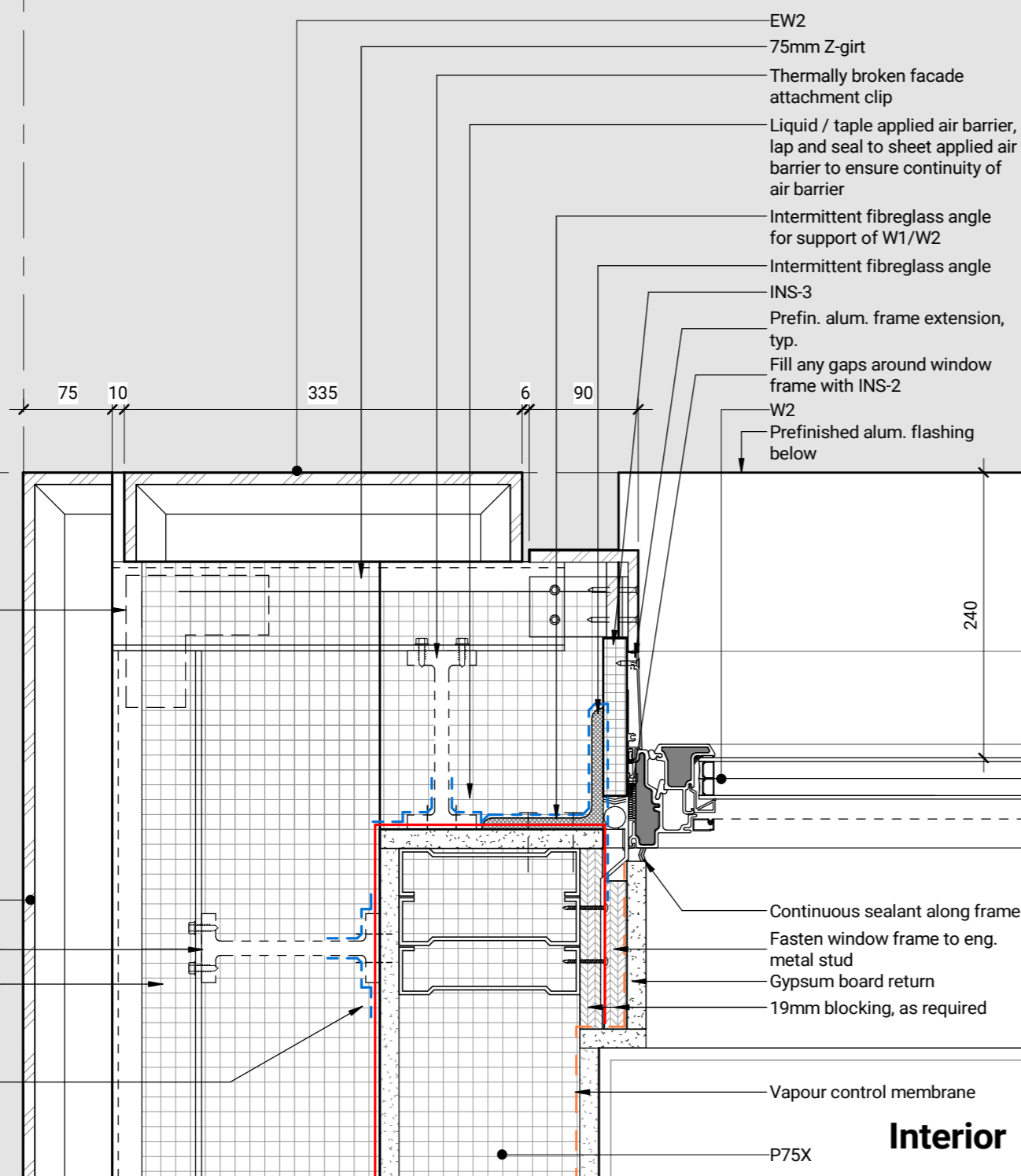
2

A605

2x

Exterior

B



Secure z-girts at corners to maintain plumbness of EW2 cladding, as required.

EW2

Thermally broken facade attachment clip

Galvanized horizontal z-girt

Liquid / tape applied air barrier, lap and seal to sheet applied air barrier to ensure continuity of air barrier

EW2

75mm Z-girt

Thermally broken facade attachment clip

Liquid / tape applied air barrier, lap and seal to sheet applied air barrier to ensure continuity of air barrier

Intermittent fiberglass angle for support of W1/W2

Intermittent fiberglass angle

INS-3

Prefin. alum. frame extension, typ.

Fill any gaps around window frame with INS-2

W2

Prefinished alum. flashing below

Continuous sealant along frame

Fasten window frame to eng. metal stud

Gypsum board return

19mm blocking, as required

Vapour control membrane

P75X

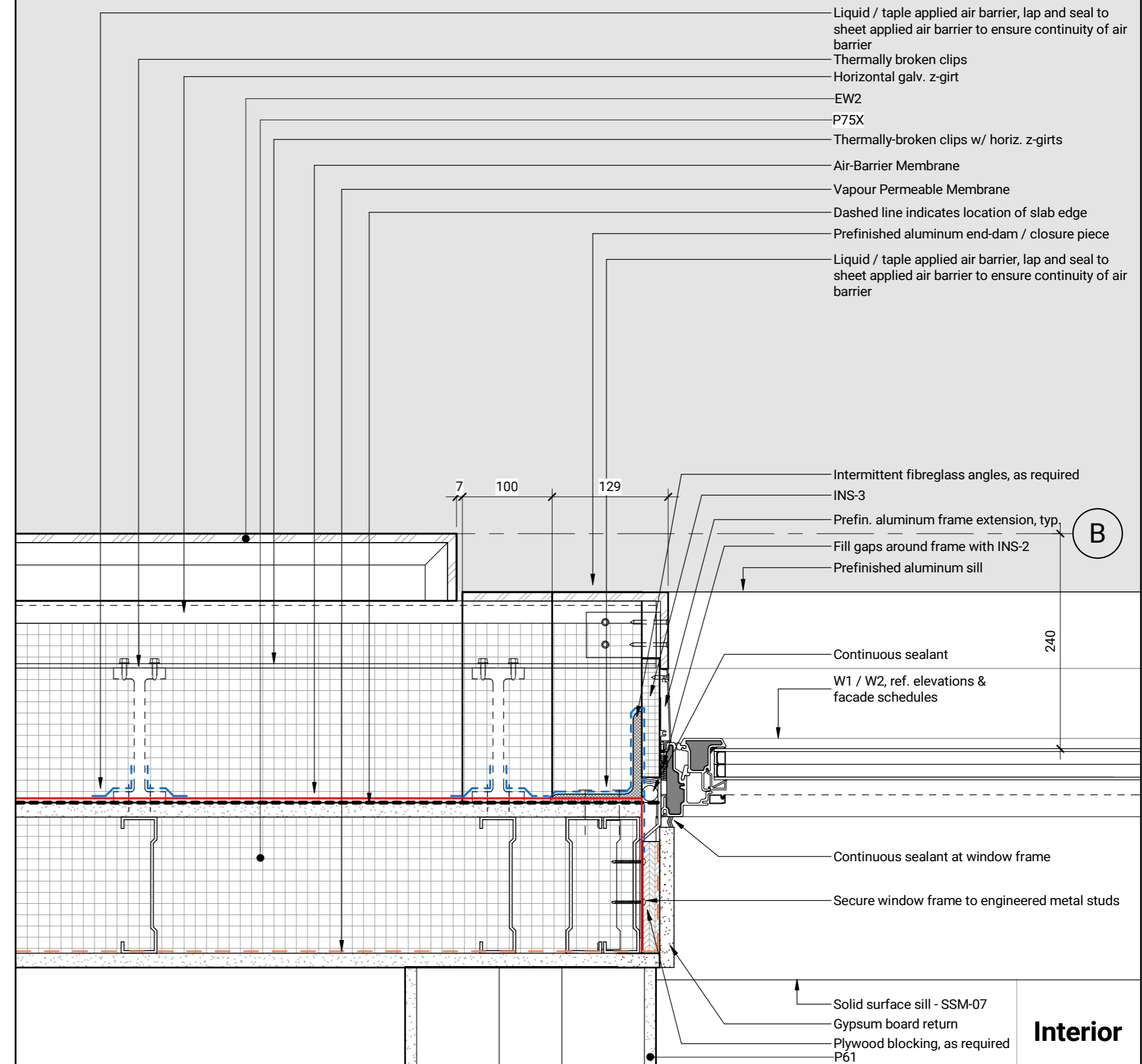
Interior

Typical Corner Detail @ Glazed Window

1:5

11  
A606

Exterior



Liquid / tape applied air barrier, lap and seal to sheet applied air barrier to ensure continuity of air barrier

Thermally broken clips

Horizontal galv. z-girt

EW2

P75X

Thermally-broken clips w/ horiz. z-girts

Air-Barrier Membrane

Vapour Permeable Membrane

Dashed line indicates location of slab edge

Prefinished aluminum end-dam / closure piece

Liquid / tape applied air barrier, lap and seal to sheet applied air barrier to ensure continuity of air barrier

Intermittent fiberglass angles, as required

INS-3

Prefin. aluminum frame extension, typ.

Fill gaps around frame with INS-2

Prefinished aluminum sill

Continuous sealant

W1 / W2, ref. elevations & facade schedules

Continuous sealant at window frame

Secure window frame to engineered metal studs

Solid surface sill - SSM-07

Gypsum board return

Plywood blocking, as required

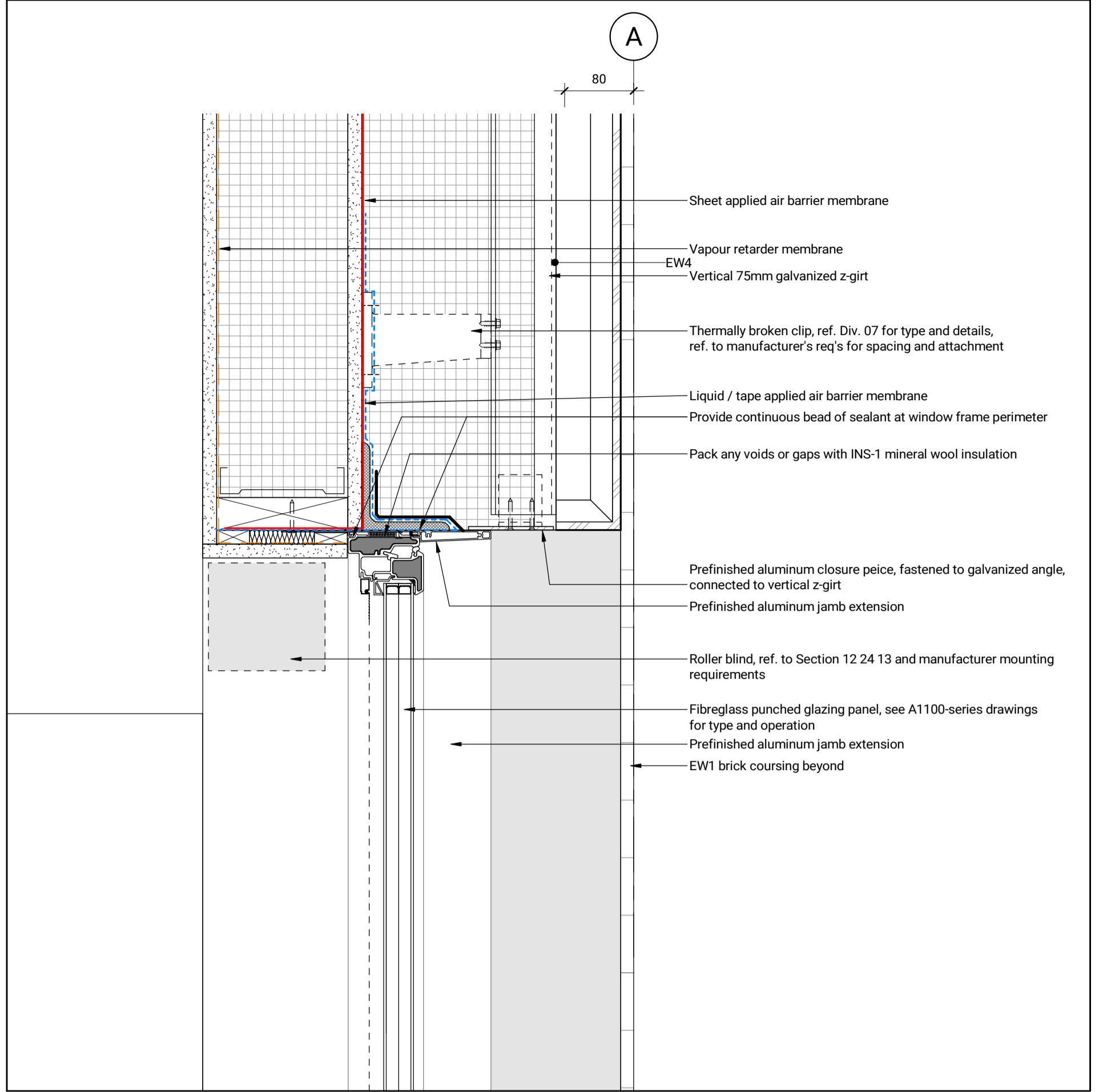
P61

Interior

Typical Detail - Partition Wall Detail at EW2 & Punched Window

1:5

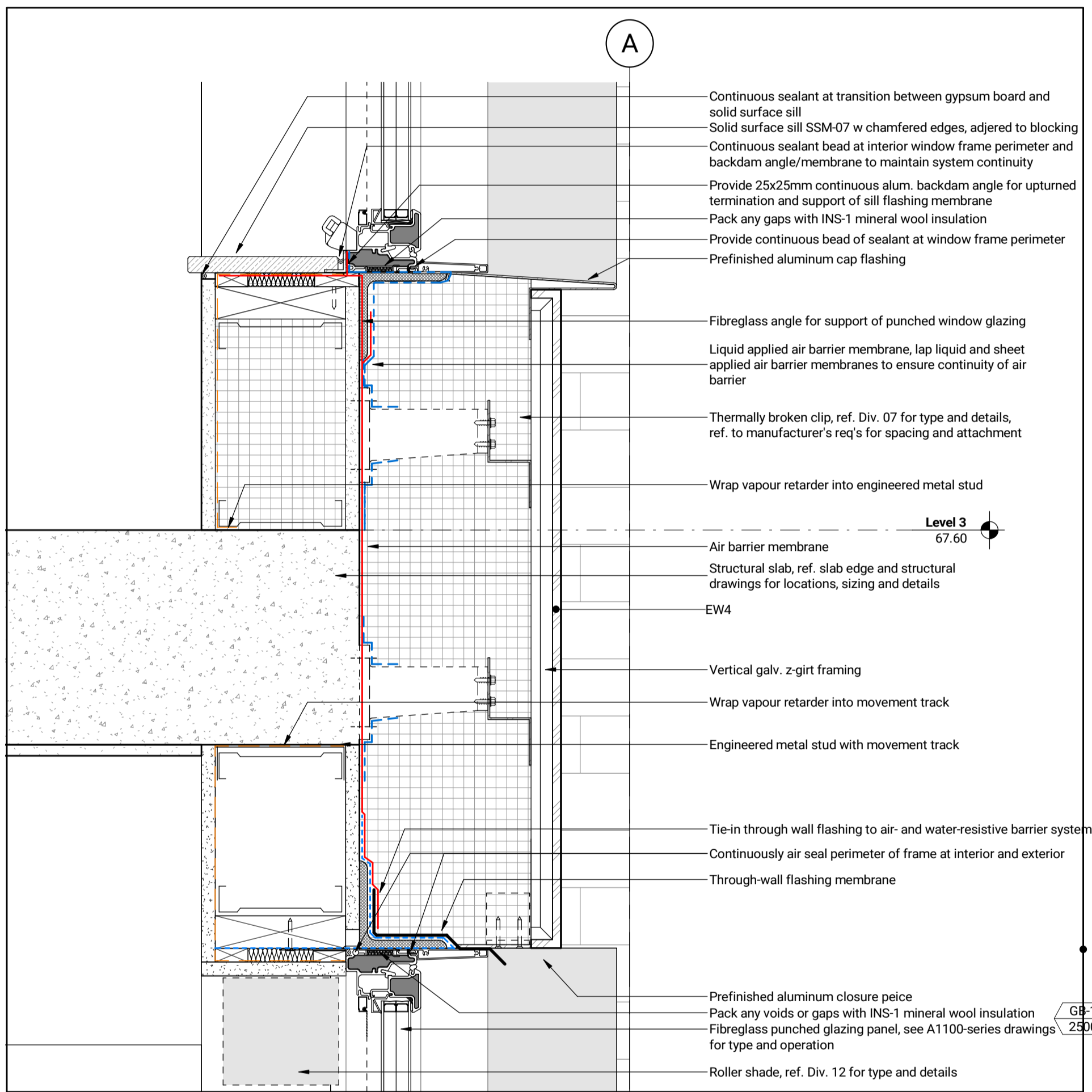
8  
A606



Typical Detail - EW2a to W1 Transition Detail at Window Head

1 : 5

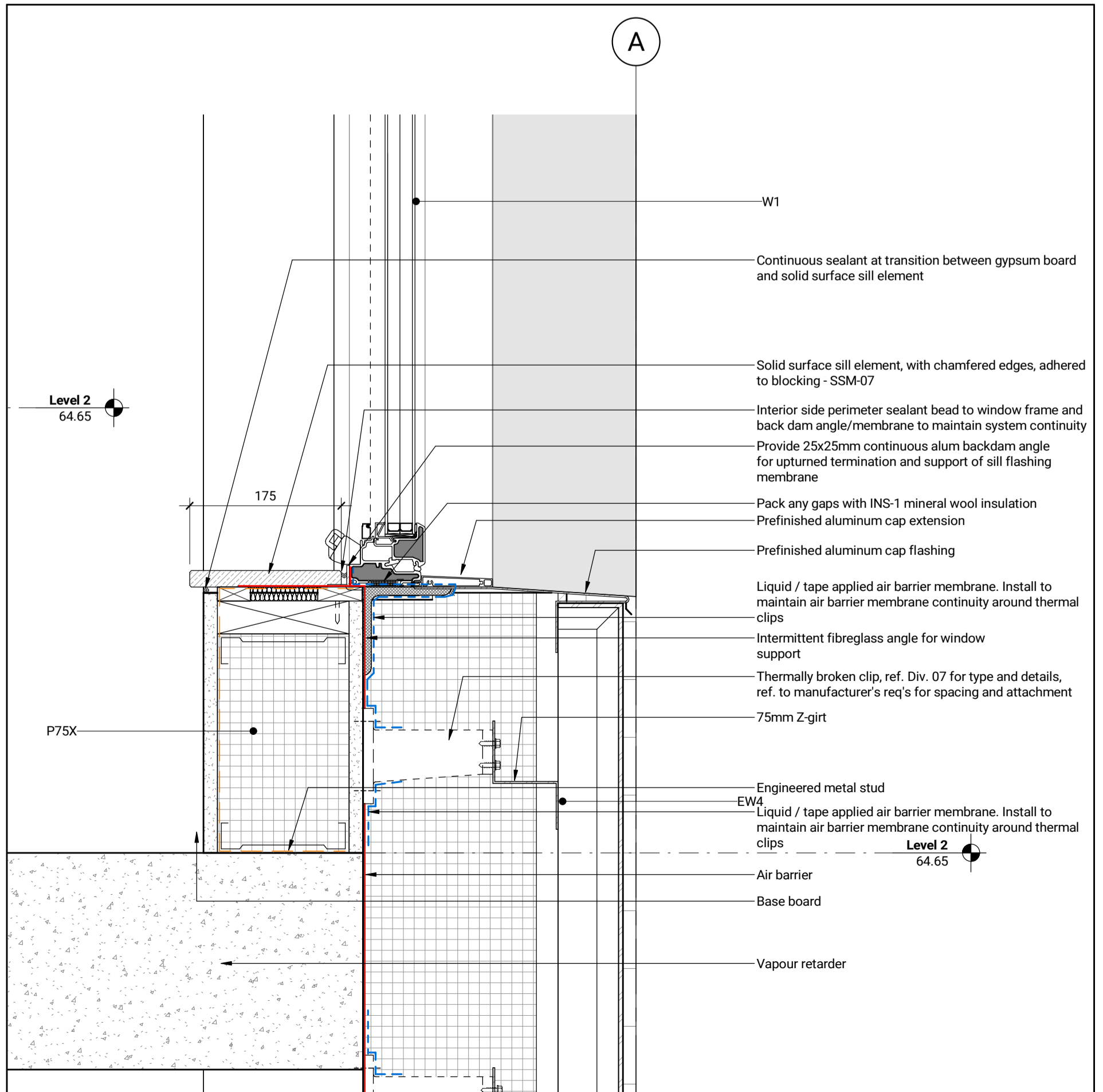
6  
A652



Typical Detail - EW4 to W1 Transition Detail at Window Head/Sill

1 : 5

5  
A652



Typical Detail - W1 to EW2a Transition Detail at Window Sill

1 : 5

4  
A652