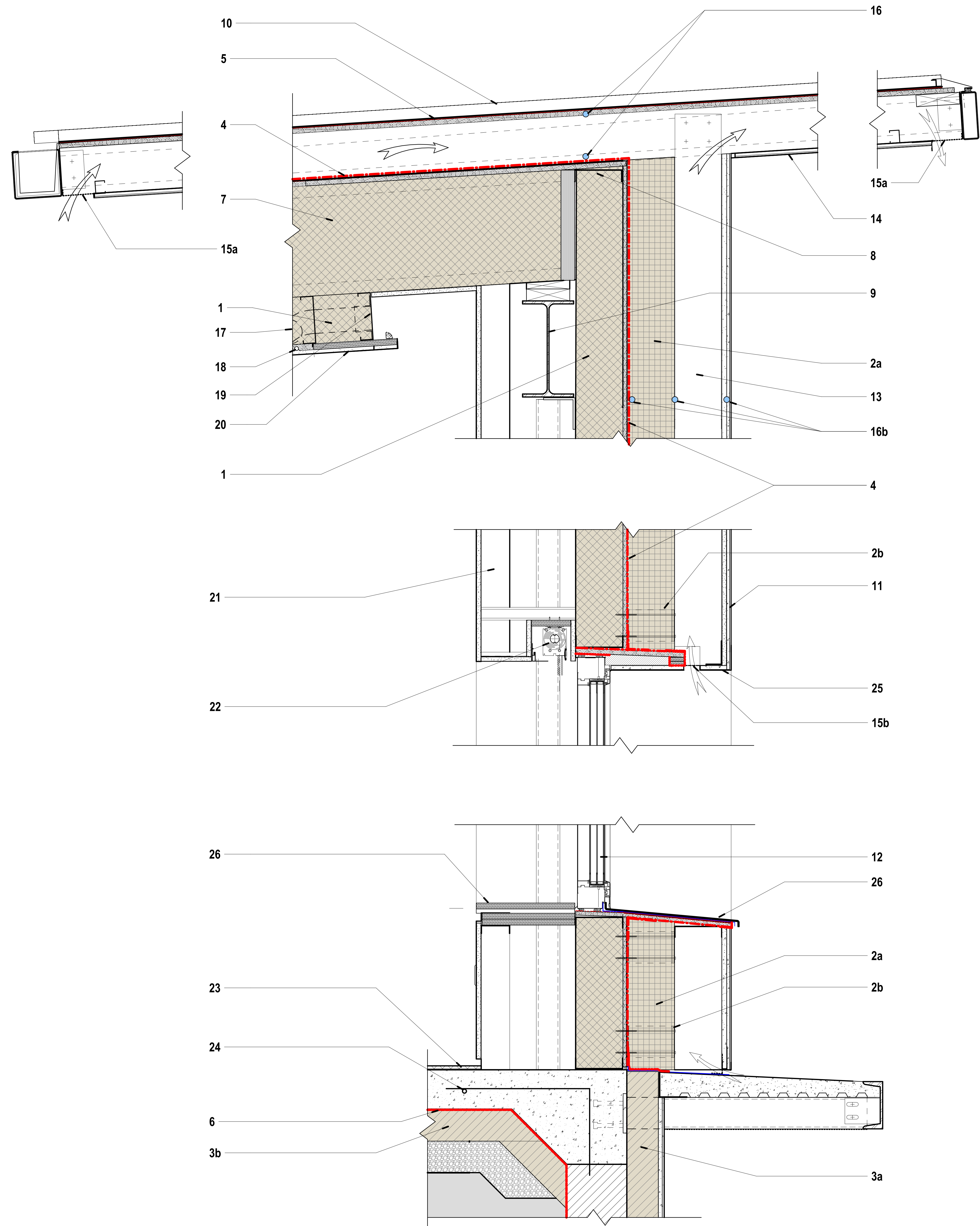


## Wall Section Notes

- |    |  |     |  |
|----|--|-----|--|
| 1  | 6" Mineral wool batts  | 14  | 7' overhang on the north side to block summer sun  |
| 2a | 6" continuous mineral wool board - 2 layers staggered 3" thick   | 15a | Perforated stainless steel air vent at high and low side of roof                                       |
| 2b | Cascadia clip 6" - used to connect sunscreen wall stud to structural stud and prevent thermal bridge           | 15b | Perforated metal air intake  |
| 3a | 4" EPS foam foundation insulation extends down 4' below grade  | 16a | Temperature sensors embedded in roof deck and in airspace  |
| 3b | 4" EPS foam slab insulation with termite resistant polystyrene   | 16b | Temperature sensors embedded in stucco, in airspace and behind continuous insulation                   |
| 4  | Zip board fully taped air and weather resistant barrier  | 17  | ERV Zehnder tubing on interior side of ceiling   |
| 5  | Plywood with waterproof membrane   | 18  | Radiant tubing covering ceiling in aluminum wrapped osb panels   |
| 6  | Termite shield vapor barrier   | 19  | ERV air supply and exhaust in coves to hide utilities and avoid unsightly grills in walls and ceilings |
| 7  | 14" TJI roof support with 14" mineral wool batts and metal stud framing below for cove support                 | 20  | 1/2" gypsum board for radiant performance  |
| 8  | Typical walls - metal stud structural framing. Metal studs chosen for termite resistance and recycling ability | 21  | Service distribution layer for shelving, power, blinds, wiring   |
| 9  | Steel beam header only at large expanse of living room windows   | 22  | Blinds   |
| 10 | Metal roof painted white for durability and rainwater harvesting   | 23  | Porcelain tile floors for radiant performance  |
| 11 | Synthetic stucco on 5/8" glass-mat exterior gypsum sheathing   | 24  | Radiant tubing in floor slab - only at exterior walls  |
| 12 | Triple glazed Zola aluminum clad wood windows  | 25  | Windows set toward interior to maximize shading of window boxes  |
| 13 | Sunscreen wall - ventilated air space. 6" air space under main roof, 1' airspace on south bedroom wing         | 26  | Large window sill painted white reflects light to improve daylighting                                  |



0 3' 6' 12'